

March 7, 2024

Addendum 10

Swaback Architects +Planners
7550 E. McDowell Dr.
Scottsdale, AZ 85250

Attn: Kit Gallup

Re: White Mountain Apache Tribe – Fort Apache Boys Dormitory Remodel
LSW Project No. 2020-175.000

Subject: Delta 2 (Addendum 10) MPE Revisions

Mr. Gallup,

Following is an itemized narrative of LSW's revisions made in the Delta 2 Addendum 10 drawing set dated March 7, 2024, for mechanical and electrical portions of the subject project.

MECHANICAL REVISIONS

Sheet M7.1

1. Updated the electrical information for both pumps from 1-phase motor to 3-phase motor per response to bidder question. No anticipated cost impact to owner as no other items on pump updated other than the phase selected.

ELECTRICAL REVISIONS

Sheet E0.02

2. Updated Equipment Connection Schedule for pumps P-1-01 and 02 change to 3 phase motors per response to bidder question.

Sheet E2.01

3. Updated plan views to show the receptacles and circuits in the Assembly spaces per bidder clarifications.
4. Updated circuits for Lift, FABP and Elevator cab lighting to better balance loads after pump changes noted above. There are no changes to circuit/breaker sizes.

Sheet E2.03

5. Updated circuits for janitor receptacle to better balance loads after pump changes noted above. There are no changes to circuit/breaker sizes.

Sheet E3.01

6. Updated circuits for pumps P-1-01 and 02 change to 3 phase motors per response to bidder question.



Sheet E4.01

7. Updated circuit for elevator machine room lighting to better balance loads after pump changes noted above. There are no changes to circuit/breaker sizes.
8. Removed keyed notes at occupancy sensors in restroom vestibules per response to bidder question.

Sheet E4.02

9. Added track lighting fixture type in Entry per response to bidder question.
10. Removed keyed note at occupancy sensor in Lobby per response to bidder question.

Sheet E4.03

11. Added keyed note 3 at box in Mechanical room per response to bidder question.

Sheet E7.01

12. Updated circuits for pumps P-1-01 and 02 change to 3 phase motors per response to bidder question.
13. Updated circuits for Lift, FABP, Elevator cab lighting, and elevator machine room lighting to better balance loads after pump changes noted above. There are no changes to circuit/breaker sizes.

Sincerely,

LSW ENGINEERS ARIZONA, INC.

Rick D'Andrea
Vice President

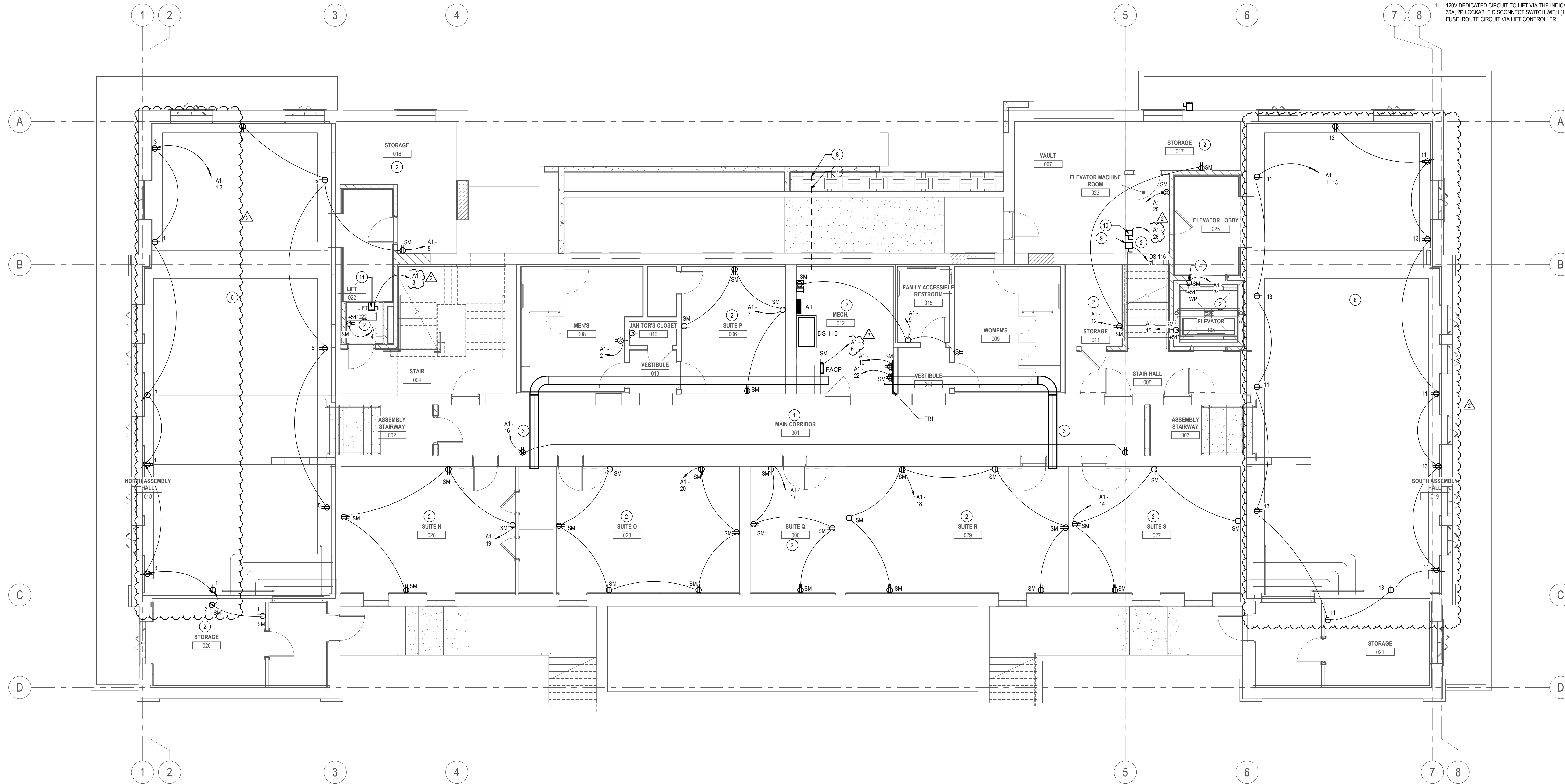
RJD:ELB

SHEET NOTES

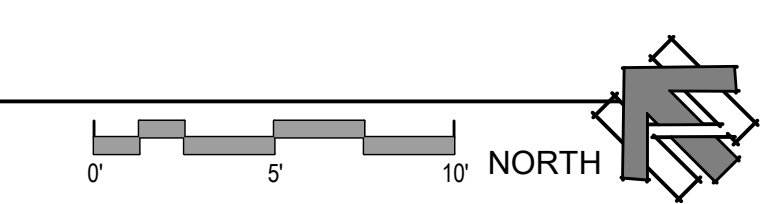
A. ALL RACEWAY AND BACKBOX LOCATIONS INDICATED TO BE INSTALLED IN EXPOSED CONDITIONS, SHALL BE APPROVED BY THE ARCHITECT PRIOR TO ROUGH-IN.

KEYED NOTES (C)

1. RECESS NEW DEVICES IN THE CORRIDOR.
2. ALL NEW DEVICES AND CONDUIT IN SPACE SHALL BE SURFACE MOUNTED (SM).
3. PROPOSED LOCATION FOR ROUTING OF BRANCH CIRCUITS ACROSS CORRIDOR.
4. DEDICATED ELEVATOR SUMP PIT PUMP RECEPTACLE, 12HP, 120V-1Ø.
5. NOT USED.
6. ALL NEW DEVICES AND CONDUIT IN SPACE SHALL BE RECESSED AND FLUSH MOUNTED. CONTRACTOR TO COORDINATE WITH ARCHITECTURAL PLANS AND PROVIDE SHALLOW BACKBOXES AS REQUIRED.
7. (4) 4" UNDERGROUND CONDUIT STUBBED INTO ELECTRICAL ROOM.
8. ROUTE TO NEW SES LOCATION TO NORTH OF BUILDING. COORDINATE ROUTING WITH EXISTING SITE CONDITIONS. SUBMIT TO ENGINEER FOR REVIEW AND APPROVAL.
9. 2ØØV 3ØØ CONNECTION TO ELEVATOR CONTROLLER VIA FUSIBLE SHUNT-TRIP POWER MODULE. SEE ONE-LINE DIAGRAM FOR ADDITIONAL INFORMATION AND REQUIREMENTS. THE CONTROLLER LOCATION SHALL BE VERIFIED.
10. 12ØV DEDICATED CIRCUIT TO ELEVATOR CAB LIGHTS AND VENTILATION (PER NEC ARTICLE 6ØØ) VIA THE INDICATED 24ØV, 3ØØ, 2Ø LOCKABLE DISCONNECT SWITCH WITH (1) 2ØØ LØØN-RØ FUSE. ROUTE CIRCUIT VIA ELEVATOR CONTROLLER.
11. 12ØV DEDICATED CIRCUIT TO LIFT VIA THE INDICATED 24ØV, 3ØØ, 2Ø LOCKABLE DISCONNECT SWITCH WITH (1) 2ØØ LØØN-RØ FUSE. ROUTE CIRCUIT VIA LIFT CONTROLLER.



1 LOWER LEVEL - ELECTRICAL POWER PLAN
3/16" = 1'-0"



PROJECT PHASE	
<input type="checkbox"/>	PRELIMINARY PRICING 06.03.21
<input type="checkbox"/>	OWNER - REVISED SCOPE 10.31.22
<input type="checkbox"/>	CD PROGRESS SET 05.18.23
<input type="checkbox"/>	ISSUE FOR BID
<input checked="" type="checkbox"/>	ISSUE FOR CONSTRUCTION

REVISIONS		
NO.	DESCRIPTION	DATE
2	ADDENDUM 10 - MPE REVISIONS	03/07/2024

FORT APACHE -BUILDING #116 REHABILITATION
116 Geronimo Street, Fort Apache, AZ 85926
LOWER LEVEL - ELECTRICAL POWER PLAN
EDA SCOPE

DRAWN	IC
CHECKED	ELB
DATE	08.16.2023
SCALE	3/16" = 1'-0"
JOB NO.	2101
SHEET	E2.01

SHEET NOTES

A. ALL RACEWAY AND BACKBOX LOCATIONS INDICATED TO BE INSTALLED IN EXPOSED CONDITIONS, SHALL BE APPROVED BY THE ARCHITECT PRIOR TO ROUGH-IN.

KEYED NOTES (C)

1. RECESS NEW DEVICES IN THE CORRIDOR.
2. NOT USED.
3. NOT USED.
4. NOT USED.
5. SWITCHED RECEPTACLE FOR SINK DISPOSAL.
6. RECEPTACLE FOR DISHWASHER.
7. RECEPTACLE FOR REFRIGERATOR.
8. RECEPTACLE FOR CLOTHES DRYER, 30A, 208V-1Ø, 2W (2#10 AWG, 1#10AWG IN 3/4"). VERIFY NEMA CONFIGURATION WITH EQUIPMENT PROVIDED.
9. RECEPTACLE FOR CLOTHES WASHER, 20A, 120V-1Ø.
10. RECEPTACLE FOR RANGE/OVEN, 50A, 208V-1Ø, 3W (2#6 AWG, 1#6 AWG NEUTRAL, 1#10 AWG IN 1"), AND JUNCTION BOX FOR REGRULATING STYLE RANGE HOOD, 120V. VERIFY NEMA CONFIGURATION WITH EQUIPMENT PROVIDED.

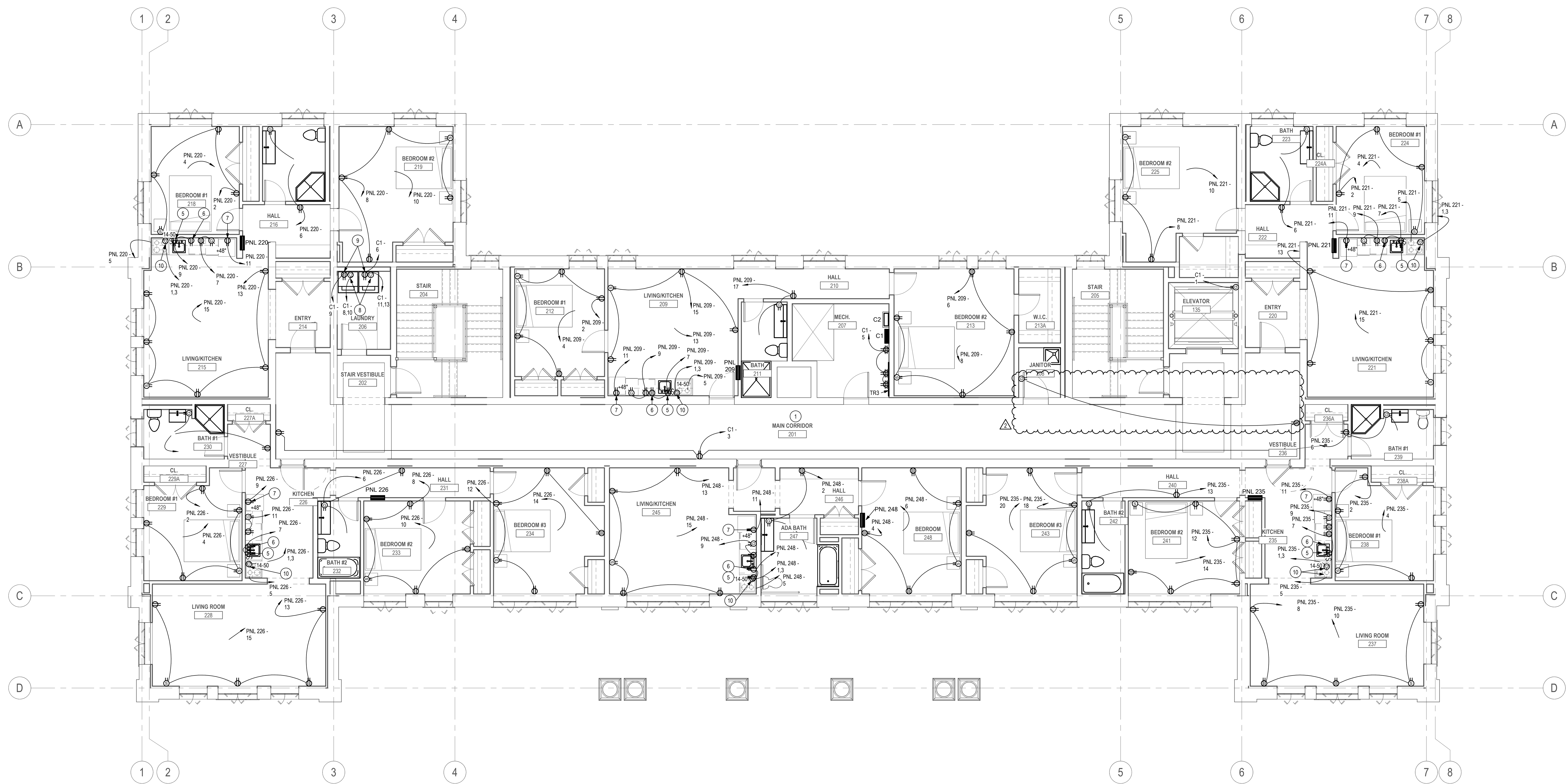


SWABACK
Architects + Planners
7550 E McDonald Drive
Scottsdale, Arizona 85250
480.367.2100 | www.swaback.com

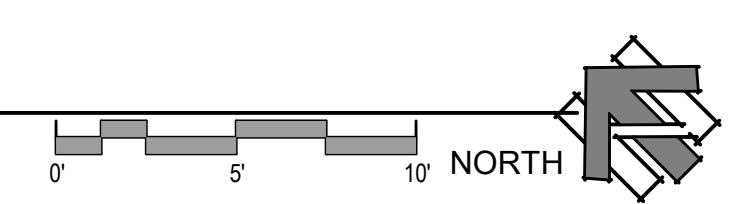


PROJECT PHASE	
<input type="checkbox"/>	PRELIMINARY PRICING 06.03.21
<input type="checkbox"/>	OWNER - REVISED SCOPE 10.31.22
<input type="checkbox"/>	CD PROGRESS SET 05.18.23
<input type="checkbox"/>	ISSUE FOR BID
<input checked="" type="checkbox"/>	ISSUE FOR CONSTRUCTION

REVISIONS		
NO.	DESCRIPTION	DATE
2	ADDENDUM 10 - MPE REVISIONS	03/07/2024



1 UPPER LEVEL - ELECTRICAL POWER PLAN
3/16" = 1'-0"



FORT APACHE - BUILDING #116 REHABILITATION
116 Geronimo Street, Fort Apache, AZ 85926
NON EDA SCOPE
UPPER LEVEL - ELECTRICAL POWER PLAN

DRAWN	IC
CHECKED	ELB
DATE	08.16.2023
SCALE	3/16" = 1'-0"
JOB NO.	2101
SHEET	E2.03

LSWEngineers
LSW Engineers Arizona, Inc.
2333 W. Northern Ave., Ste. 9, Phoenix, AZ 85021
Office: 602.249.1200 | www.lswengineers.com
Project No. 2020-175.000

COPYRIGHT © 2021. DRAWINGS AND SPECIFICATIONS AS INSTRUMENTS OF SERVICE ARE THE PROPERTY OF THE ARCHITECT AND MAY NOT BE REPRODUCED WITHOUT THE WRITTEN PERMISSION OF SWABACK ARCHITECTS + PLANNERS P.C.

3/5/2024 12:26:37 PM

SHEET NOTES

A. ALL RACEWAY AND BACKBOX LOCATIONS INDICATED TO BE INSTALLED IN EXPOSED CONDITIONS, SHALL BE APPROVED BY THE ARCHITECT PRIOR TO ROUGH-IN.

KEYED NOTES (C)

1. MOUNT DETECTOR WITHIN ELEVATOR PIT. REFERENCE ELEVATOR WIRING DIAGRAM DETAIL 11E7.01.



SWABACK
Architects + Planners
7550 E McDonald Drive
Scottsdale, Arizona 85250
480.367.2100 | www.swaback.com

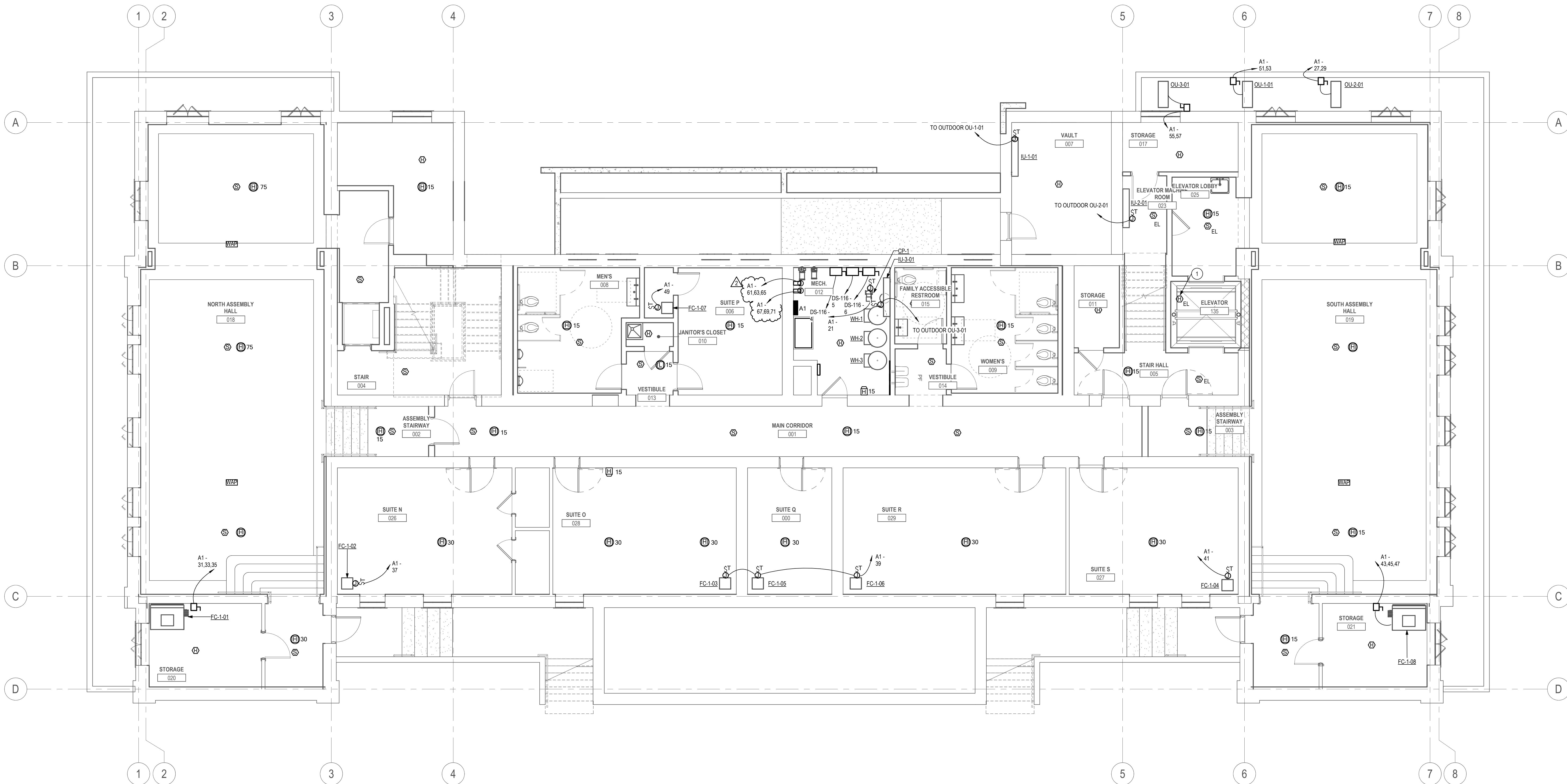


PROJECT PHASE

<input type="radio"/>	PRELIMINARY PRICING	06.03.21
<input type="radio"/>	OWNER - REVISED SCOPE	10.31.22
<input type="radio"/>	CD PROGRESS SET	05.18.23
<input type="radio"/>	ISSUE FOR BID	
<input checked="" type="radio"/>	ISSUE FOR CONSTRUCTION	

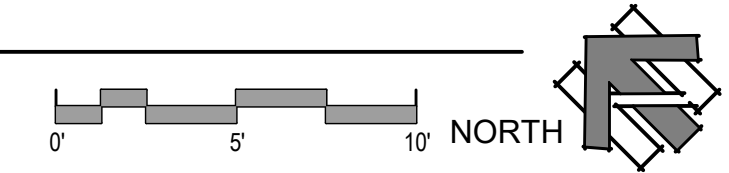
REVISIONS

NO.	DESCRIPTION	DATE
2	ADDENDUM 10 - MPE REVISIONS	03/07/2024



1 LOWER LEVEL - ELECTRICAL HVAC POWER & SPECIAL SYSTEMS PLAN

3/16" = 1'-0"



FORT APACHE -BUILDING #116 REHABILITATION
EDA SCOPE
116 Geronimo Street, Fort Apache, AZ 85926
LOWER LEVEL - ELEC. HVAC POWER & SPEC. SYS. PLAN

DRAWN	IC
CHECKED	ELB
DATE	08.16.2023
SCALE	3/16" = 1'-0"
JOB NO.	2101
SHEET	E3.01

LSWEngineers
LSW Engineers Arizona, Inc.
2333 W. Northern Ave., Ste. 9, Phoenix, AZ 85021
Office: 602.240.1200 | www.lswengineers.com
Project No. 2020-175.000

COPYRIGHT © 2024 DRAWINGS AND SPECIFICATIONS AS INSTRUMENTS OF SERVICE ARE THE PROPERTY OF THE ARCHITECT AND MAY NOT BE REPRODUCED WITHOUT THE WRITTEN PERMISSION OF SWABACK ARCHITECTS + PLANNERS, P.C.

3/5/2024 1:26:39 PM

DEDUCT ALTERNATE FOR LIGHTING CONTROLS SHALL BE LUTRON VIVE WIRELESS SYSTEM. SEE NOTES FOR MORE INFORMATION.

WIRELESS CONTROL NOTE

THE LIGHTING CONTROL SYSTEM DATA LOW VOLTAGE CABLE/WIRING TESTING AND COMMISSIONING SHALL BE CONDUCTED BY AN INDEPENDENT 3RD PARTY. WITH SPECIFIC REPORT DOCUMENTATION MADE AVAILABLE TO THE DISTRICT FOR REVIEW. THE DOCUMENTATION SHALL CLEARLY IDENTIFY EACH SPECIFIC CABLE TESTED BY A UNIQUE IDENTIFICATION SEQUENCE NUMBER AND THE LOCATION OF EACH CABLE WITHIN THE CAMPUS BUILDINGS, I.E. AS AN EXAMPLE - CABLE F106A CLASSROOM, F108B CLASSROOM, ETC. UTILIZE THE ROOM NUMBER, A LETTER SEQUENCER AND THE ROOM NAME, WHERE DATA CABLES TRANSITION BETWEEN ROOMS, IDENTIFY EACH ACCORDINGLY. THE TESTING AND COMMISSIONING PROCESS SHALL BEGIN ONLY AFTER ALL DATA CABLE R45 FIELD TERMINATIONS HAVE BEEN COMPLETED AND THE CABLE PLACED INTO POSITION BY THE INSTALLER. IDENTIFICATION TAGS WITH THE UNIQUE IDENTIFIER SHALL BE PLACED ON EVERY CABLE. PLACE THE TAG WHERE EASILY VIEWABLE WITHOUT THE NEED TO REMOVE ACCESS PANELS OR COVERS WHERE POSSIBLE. REFERENCE SPECIFICATION SECTION 26.0925 NETWORK LIGHTING CONTROLS FOR ADDITIONAL INFORMATION AND REQUIREMENTS

SHEET NOTES

- A. ALL RACEWAY AND BACKBOX LOCATIONS INDICATED TO BE INSTALLED IN EXPOSED CONDITIONS, SHALL BE APPROVED BY THE ARCHITECT PRIOR TO ROUGH-IN.
- B. ALL LIGHTING CONTROL DEVICES SHOWN ARE PART OF THE WIRED OR WIRELESS LIGHTING CONTROL SYSTEM. DEVICES SHOWN DASHED ARE ADDITIONAL DEVICES REQUIRED TO COMPLETE THE WIRELESS VIVE SYSTEM.
- C. THE EXTERIOR LIGHTING FIXTURES SHALL BE CONTROLLED VIA THE LIGHTING CONTROL PANEL RP OR THE ALTERNATE XPS PANEL.

KEYED NOTES (C)

- 1. ALL NEW LIGHT SWITCH DEVICES AND LIGHTING IN THIS SPACE SHALL BE RECESSED.
- 2. ALL NEW LIGHT SWITCH DEVICES, LIGHTING, AND CONDUIT IN THIS SPACE SHALL BE SURFACE MOUNTED.
- 3. 20W REMOTE EMERGENCY INVERTER SERVING (1) L17 FIXTURE FOR EGRESS LIGHTING. MOUNT ABOVE AT -8'-0" AFF IN AN ACCESSIBLE AREA. BATTERY SHALL BE CONSTANTLY ENERGIZED (UNSWITCHED) AND SHALL OPERATE THE EMERGENCY LIGHT FIXTURE IN THE EVENT OF A POWER OUTAGE. DUAL LITE LPS-20-S OR EQUAL.
- 4. 375W REMOTE EMERGENCY INVERTER SERVING (5) L11 FIXTURES FOR EGRESS LIGHTING. MOUNT ABOVE AT -8'-0" AFF IN AN ACCESSIBLE AREA. BATTERY SHALL BE CONSTANTLY ENERGIZED (UNSWITCHED) AND SHALL OPERATE THE EMERGENCY LIGHT FIXTURE IN THE EVENT OF A POWER OUTAGE. DUAL LITE LG-375-S OR EQUAL.



SWABACK
Architects + Planners
7550 E McDonald Drive
Scottsdale, Arizona 85250
480.367.2100 | www.swaback.com

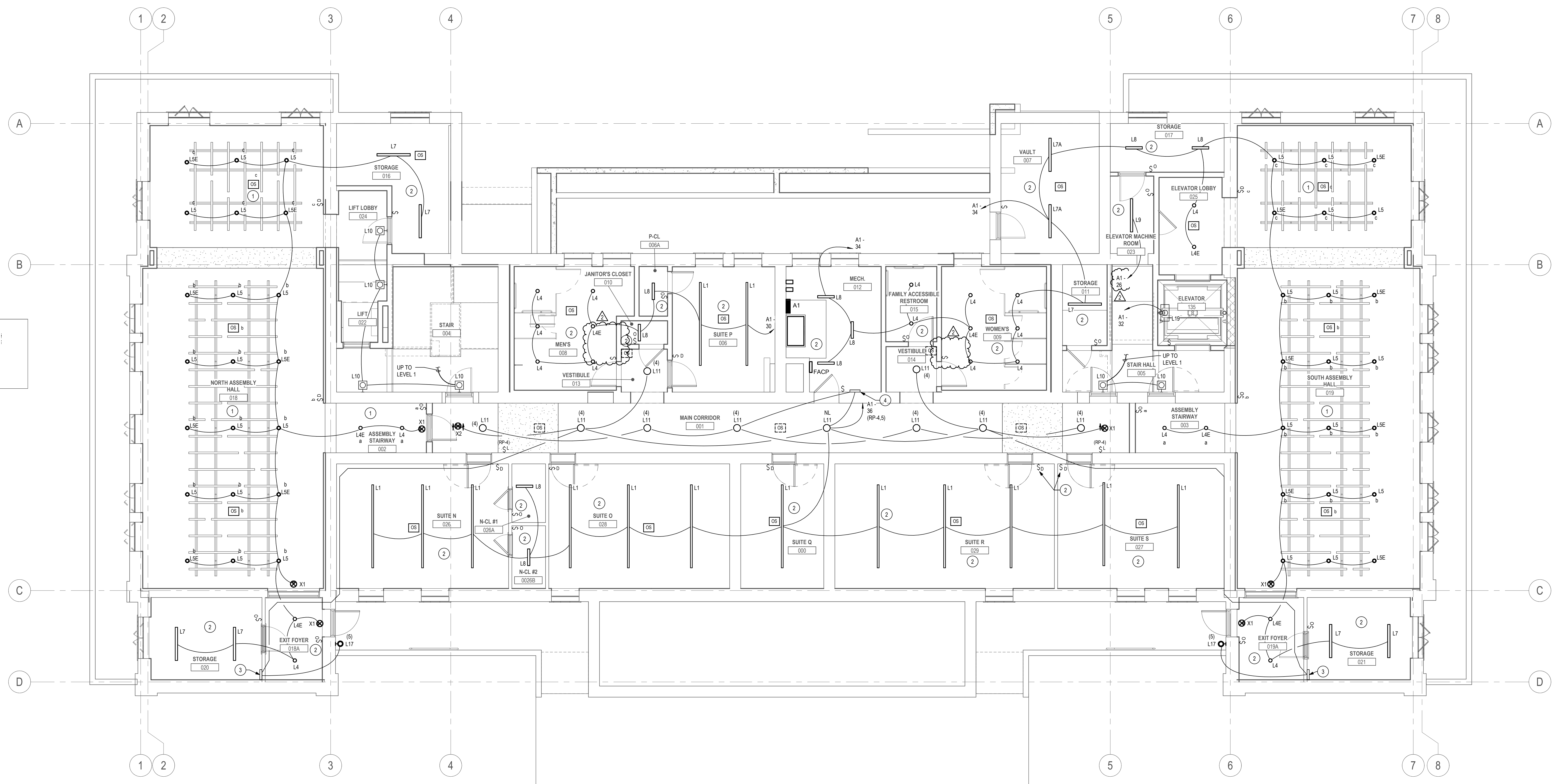


PROJECT PHASE	
<input type="radio"/>	PRELIMINARY PRICING 06.03.21
<input type="radio"/>	OWNER - REVISED SCOPE 10.31.22
<input type="radio"/>	CD PROGRESS SET 05.18.23
<input type="radio"/>	ISSUE FOR BID
<input checked="" type="radio"/>	ISSUE FOR CONSTRUCTION

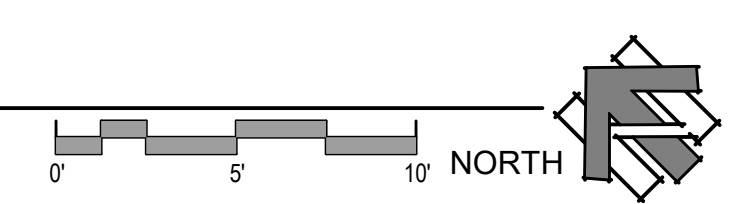
REVISIONS		
NO.	DESCRIPTION	DATE
2	ADDENDUM 10 - MPE REVISIONS	03/07/2024

FORT APACHE -BUILDING #116 REHABILITATION
EDA SCOPE
116 Geronimo Street, Fort Apache, AZ 85926
LOWER LEVEL - ELECTRICAL LIGHTING PLAN

DRAWN	MLL
CHECKED	ELB
DATE	08.16.2023
SCALE	3/16" = 1'-0"
JOB NO.	2101
SHEET	E4.01



1 LOWER LEVEL - ELECTRICAL LIGHTING PLAN
3/16" = 1'-0"



LSWEngineers
LSW Engineers Arizona, Inc.
2333 W. Northern Ave., Ste. 9, Phoenix, AZ 85021
Office: 602.249.1200 | www.lswengineers.com
Project No. 2020-175.000

DRAWINGS AND SPECIFICATIONS AS INSTRUMENTS OF SERVICE ARE THE PROPERTY OF THE ARCHITECT AND MAY NOT BE REPRODUCED WITHOUT THE WRITTEN PERMISSION OF SWABACK ARCHITECTS + PLANNERS PHX

3/5/2024 1:26:43 PM

DEDUCT ALTERNATE FOR LIGHTING CONTROLS SHALL BE LUTRON VIVE WIRELESS SYSTEM. SEE NOTES FOR MORE INFORMATION.

WIRELESS CONTROL NOTE

THE LIGHTING CONTROL SYSTEM DATA LOW VOLTAGE CABLE/WIRING TESTING AND COMMISSIONING SHALL BE CONDUCTED BY AN INDEPENDENT 3RD PARTY WITH SPECIFIC REPORT DOCUMENTATION MADE AVAILABLE TO THE DISTRICT FOR REVIEW. THE DOCUMENTATION SHALL CLEARLY IDENTIFY EACH SPECIFIC CABLE TESTED BY A UNIQUE IDENTIFICATION SEQUENCE NUMBER AND THE LOCATION OF EACH CABLE WITHIN THE CAMPUS BUILDINGS, I.E. AS AN EXAMPLE - CABLE F106A CLASSROOM, F108B CLASSROOM, ETC. UTILIZE THE ROOM NUMBER, A LETTER SEQUENCER AND THE ROOM NAME, WHERE DATA CABLES TRANSITION BETWEEN ROOMS, IDENTIFY EACH ACCORDINGLY. THE TESTING AND COMMISSIONING PROCESS SHALL BEGIN ONLY AFTER ALL DATA CABLE R45 FIELD TERMINATIONS HAVE BEEN COMPLETED AND THE CABLE PLACED INTO POSITION BY THE INSTALLER. IDENTIFICATION TAGS WITH THE UNIQUE IDENTIFIER SHALL BE PLACED ON EVERY CABLE. PLACE THE TAG WHERE EASILY VIEWABLE WITHOUT THE NEED TO REMOVE ACCESS PANELS OR COVERS WHERE POSSIBLE. REFERENCE SPECIFICATION SECTION 26.0925 NETWORK LIGHTING CONTROLS FOR ADDITIONAL INFORMATION AND REQUIREMENTS

SHEET NOTES

- A. ALL RACEWAY AND BACKBOX LOCATIONS INDICATED TO BE INSTALLED IN EXPOSED CONDITIONS, SHALL BE APPROVED BY THE ARCHITECT PRIOR TO ROUGH-IN.
- B. ALL LIGHTING CONTROL DEVICES SHOWN ARE PART OF THE WIRED OR WIRELESS LIGHTING CONTROL SYSTEM. DEVICES SHOWN DASHED ARE ADDITIONAL DEVICES REQUIRED TO COMPLETE THE WIRELESS VIVE SYSTEM.
- C. THE EXTERIOR LIGHTING FIXTURES SHALL BE CONTROLLED VIA THE LIGHTING CONTROL PANEL RP OR THE ALTERNATE XPS PANEL.

KEYED NOTES (1)

- 1. ALL NEW LIGHT SWITCH DEVICES AND LIGHTING IN THIS SPACE SHALL BE RECESSED.
- 2. ALL NEW LIGHT SWITCH DEVICES, LIGHTING, AND CONDUIT IN THIS SPACE SHALL BE SURFACE MOUNTED.
- 3. 20W REMOTE EMERGENCY INVERTER SERVING (1) L17 FIXTURE FOR EGRESS LIGHTING. MOUNT ABOVE AT +8'-0" AFF IN AN ACCESSIBLE AREA. BATTERY SHALL BE CONSTANTLY ENERGIZED (UNSWITCHED) AND SHALL OPERATE THE EMERGENCY LIGHT FIXTURE IN THE EVENT OF A POWER OUTAGE. DUAL LITE LPS-20-S OR EQUAL.
- 4. 600W REMOTE EMERGENCY INVERTER SERVING EXTERIOR FIXTURE FOR EGRESS LIGHTING. MOUNT ABOVE AT +8'-0" AFF IN AN ACCESSIBLE AREA. BATTERY SHALL BE CONSTANTLY ENERGIZED (UNSWITCHED) AND SHALL OPERATE THE EMERGENCY LIGHT FIXTURE IN THE EVENT OF A POWER OUTAGE. DUAL LITE LG-600-S OR EQUAL.
- 5. PROVIDE WITH CURRENT LIMITING DEVICE (480W MAX) CONTECH LIGHTING LA-23-RN-B-REGS-B OR EQUAL.

SWABACK
Architects + Planners
7550 E. McDonald Drive
Scottsdale, Arizona 85250
480.367.2100 | www.swaback.com

Professional Engineer Seal:
JOSHUA SHORE
No. 69331
Exp. 12/31/2024

PROJECT PHASE

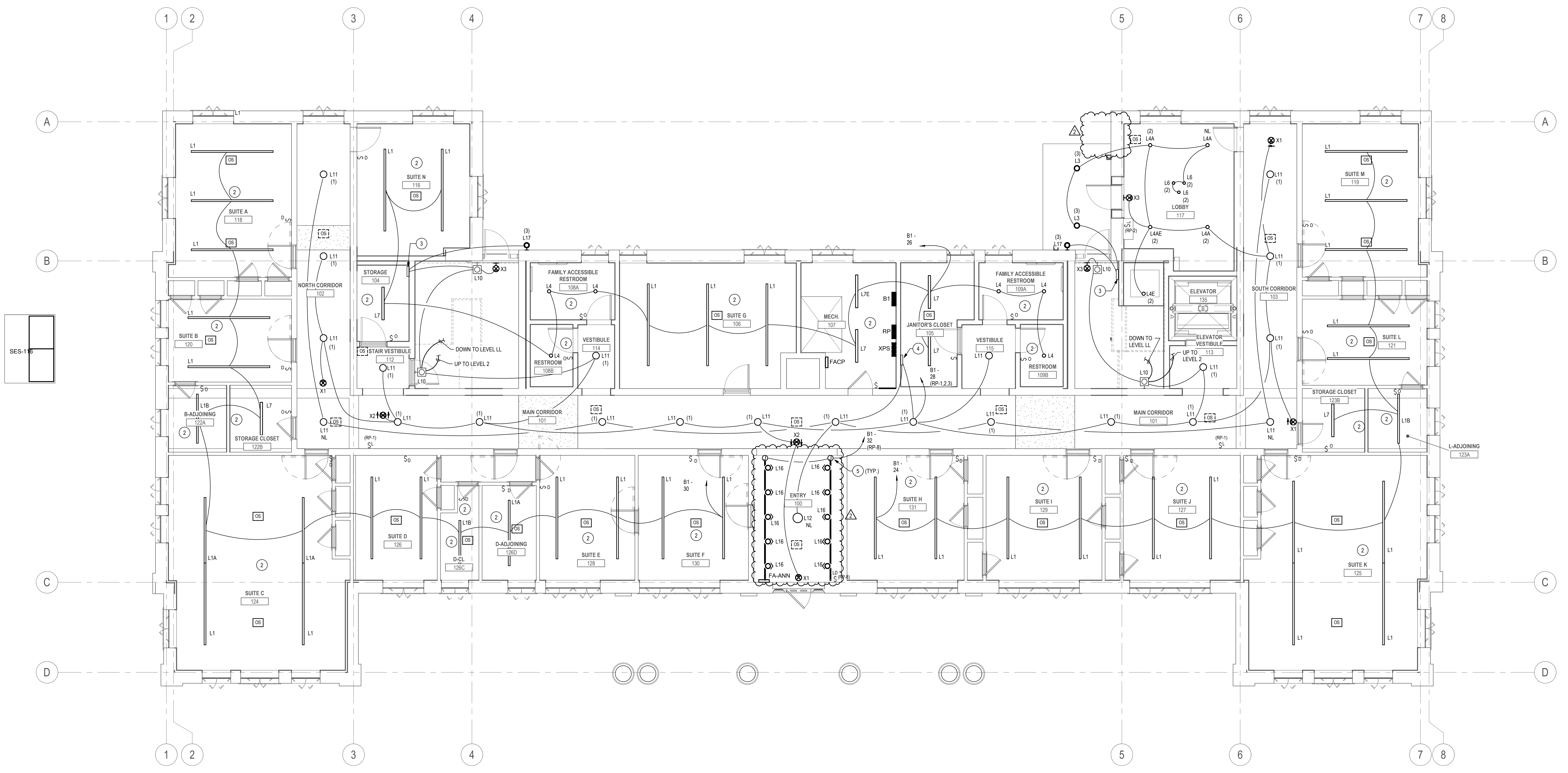
<input type="checkbox"/>	PRELIMINARY PRICING	06.03.21
<input type="checkbox"/>	OWNER - REVISED SCOPE	10.31.22
<input type="checkbox"/>	CD PROGRESS SET	05.18.23
<input type="checkbox"/>	ISSUE FOR BID	
<input checked="" type="checkbox"/>	ISSUE FOR CONSTRUCTION	

REVISIONS

NO.	DESCRIPTION	DATE
2	ADDENDUM 10 - MPE REVISIONS	03/07/2024

FORT APACHE -BUILDING #116 REHABILITATION
116 Geronimo Street, Fort Apache, AZ 85926
EDA SCOPE
MAIN LEVEL - ELECTRICAL LIGHTING PLAN

DRAWN MLL
CHECKED ELB
DATE 08.16.2023
SCALE 3/16" = 1'-0"
JOB NO. 2101
SHEET E4.02



1 MAIN LEVEL - ELECTRICAL LIGHTING PLAN
3/16" = 1'-0"

COPYRIGHT © 2021. DRAWINGS AND SPECIFICATIONS AS INSTRUMENTS OF SERVICE ARE THE PROPERTY OF THE ARCHITECT AND MAY NOT BE REPRODUCED WITHOUT THE WRITTEN PERMISSION OF SWABACK ARCHITECTS + PLANNERS, P.C.

DEDUCT ALTERNATE FOR LIGHTING CONTROLS SHALL BE LUTRON VIVE WIRELESS SYSTEM. SEE NOTES FOR MORE INFORMATION.

WIRELESS CONTROL NOTE

THE LIGHTING CONTROL SYSTEM DATA LOW VOLTAGE CABLE/WIRING TESTING AND COMMISSIONING SHALL BE CONDUCTED BY AN INDEPENDENT 3RD PARTY. WITH SPECIFIC REPORT DOCUMENTATION MADE AVAILABLE TO THE DISTRICT FOR REVIEW. THE DOCUMENTATION SHALL CLEARLY IDENTIFY EACH SPECIFIC CABLE TESTED BY A UNIQUE IDENTIFICATION SEQUENCE NUMBER AND THE LOCATION OF EACH CABLE WITHIN THE CAMPUS BUILDINGS, I.E. AS AN EXAMPLE - CABLE F106A CLASSROOM, F108B CLASSROOM, ETC. UTILIZE THE ROOM NUMBER, A LETTER SEQUENCER AND THE ROOM NAME. WHERE DATA CABLES TRANSITION BETWEEN ROOMS, IDENTIFY EACH ACCORDINGLY. THE TESTING AND COMMISSIONING PROCESS SHALL BEGIN ONLY AFTER ALL DATA CABLE R45 FIELD TERMINATIONS HAVE BEEN COMPLETED AND THE CABLE PLACED INTO POSITION BY THE INSTALLER. IDENTIFICATION TAGS WITH THE UNIQUE IDENTIFIER SHALL BE PLACED ON EVERY CABLE. PLACE THE TAG WHERE EASILY VIEWABLE WITHOUT THE NEED TO REMOVE ACCESS PANELS OR COVERS WHERE POSSIBLE. REFERENCE SPECIFICATION SECTION 26.0925 NETWORK LIGHTING CONTROLS FOR ADDITIONAL INFORMATION AND REQUIREMENTS

SHEET NOTES

- A. ALL RACEWAY AND BACKBOX LOCATIONS INDICATED TO BE INSTALLED IN EXPOSED CONDITIONS, SHALL BE APPROVED BY THE ARCHITECT PRIOR TO ROUGH-IN.
- B. ALL LIGHTING CONTROL DEVICES SHOWN ARE PART OF THE WIRED OR WIRELESS LIGHTING CONTROL SYSTEM. DEVICES SHOWN DASHED ARE ADDITIONAL DEVICES REQUIRED TO COMPLETE THE WIRELESS VIVE SYSTEM.
- C. THE EXTERIOR LIGHTING FIXTURES SHALL BE CONTROLLED VIA THE LIGHTING CONTROL PANEL RP OR THE ALTERNATE XPS PANEL.

KEYED NOTES (1)

- 1. ALL NEW LIGHT SWITCH DEVICES AND LIGHTING IN THIS SPACE SHALL BE RECESSED.
- 2. ALL NEW LIGHT SWITCH DEVICES, LIGHTING, AND CONDUIT IN THIS SPACE SHALL BE SURFACE MOUNTED.
- 3. ROOM REMOTE EMERGENCY INVERTER SERVING (6) L13 FIXTURES FOR EGRESS LIGHTING. MOUNT ABOVE A1-B1 AFF IN AN ACCESSIBLE AREA. BATTERY SHALL BE CONSTANTLY ENERGIZED (UNSWITCHED) AND SHALL OPERATE THE EMERGENCY LIGHT FIXTURE IN THE EVENT OF A POWER OUTAGE. DUAL LITE LG-600-S OR EQUAL.

SWABACK
Architects + Planners
7550 E. McDonald Drive
Scottsdale, Arizona 85250
480.367.2100 | www.swaback.com

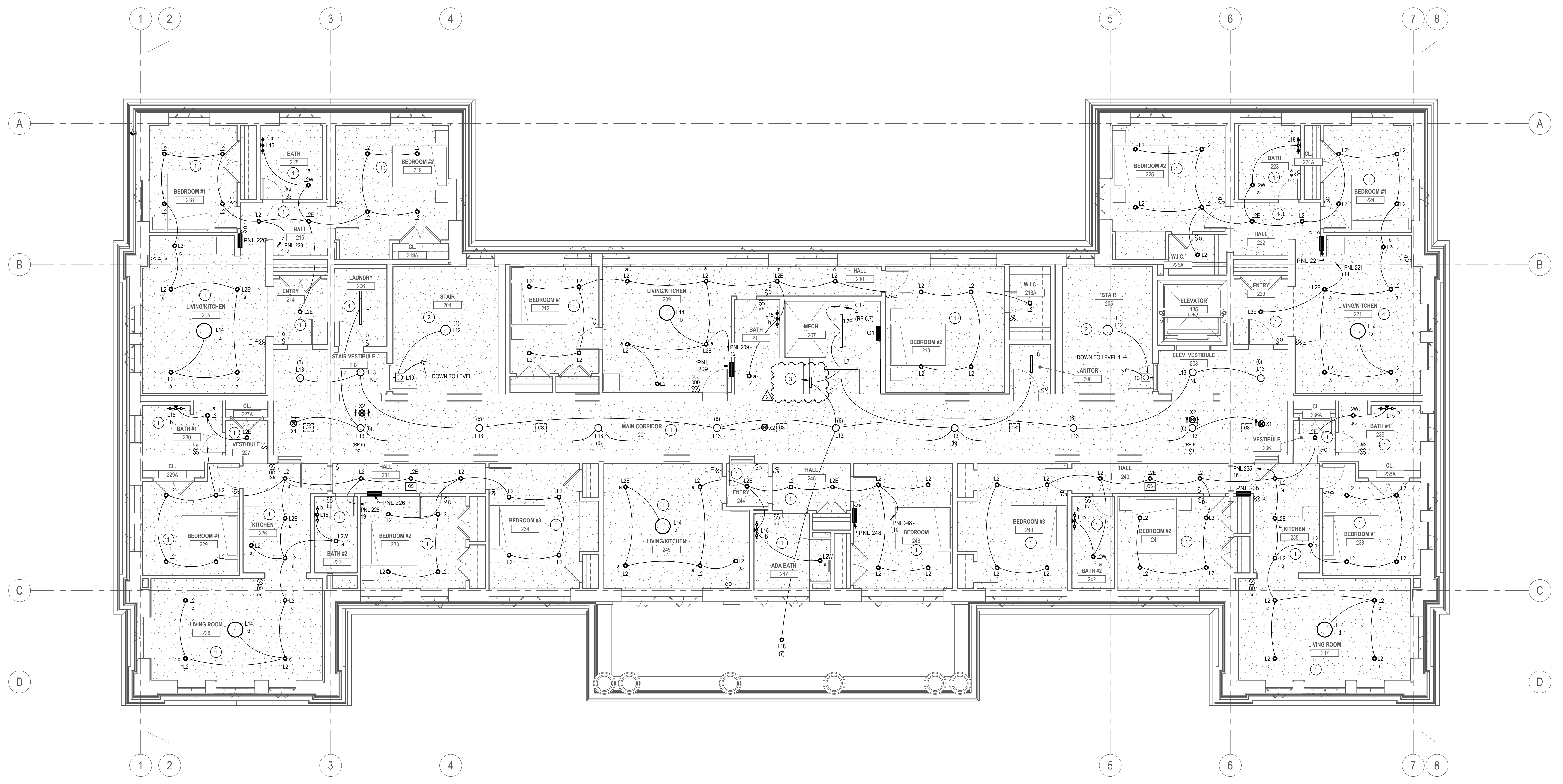
60331
JOSHUA
SHORE
Professional Engineer
Arizona P.E. No. 12578

PROJECT PHASE	
<input type="radio"/>	PRELIMINARY PRICING 06.03.21
<input type="radio"/>	OWNER - REVISED SCOPE 10.31.22
<input type="radio"/>	CD PROGRESS SET 05.18.23
<input type="radio"/>	ISSUE FOR BID
<input checked="" type="radio"/>	ISSUE FOR CONSTRUCTION

REVISIONS		
NO.	DESCRIPTION	DATE
2	ADDENDUM 10 - MPE REVISIONS	03/07/2024

FORT APACHE -BUILDING #116 REHABILITATION
NON EDA SCOPE
 116 Geronimo Street, Fort Apache, AZ 85926
UPPER LEVEL - ELECTRICAL LIGHTING PLAN

DRAWN	MLL
CHECKED	ELB
DATE	08.16.2023
SCALE	3/16" = 1'-0"
JOB NO.	2101
SHEET	E4.03



1 UPPER LEVEL - ELECTRICAL LIGHTING PLAN
 3/16" = 1'-0"

DRAWING AND SPECIFICATIONS AS INSTRUMENTS OF SERVICE ARE THE PROPERTY OF THE ARCHITECT AND MAY NOT BE REPRODUCED WITHOUT THE WRITTEN PERMISSION OF SWABACK ARCHITECTS + PLANNERS PHX

3/5/2024 1:26:45 PM



SWABACK Architects + Planners 7550 E McDonald Drive Scottsdale, Arizona 85250 480.367.2100 | www.swaback.com



PROJECT PHASE: PRELIMINARY PRICING, OWNER - REVISED SCOPE, CD PROGRESS SET, ISSUE FOR BID, ISSUE FOR CONSTRUCTION

REVISIONS table with columns for NO., DESCRIPTION, DATE

FORT APACHE -BUILDING #116 REHABILITATION MIXED EDA SCOPE ELECTRICAL PANEL SCHEDULES

DRAWN Author, CHECKED Checker, DATE 08.16.2023, SCALE 1/2" = 1'-0", JOB NO. 2101, SHEET E7.01

PANEL: B1. SUPPLY FROM: DS-116. MOUNTING: SURFACE. ENCLOSURE: NEMA 1. VOLTAGE: 208Y/120V, 3Ø, 4W. LOAD CLASSIFICATION table with columns for USE AND/OR AREA SERVED, P, TRIP, CKT#, A, B, C, CT#, TRIP, P, USE AND/OR AREA SERVED.

PANEL: A1. SUPPLY FROM: DS-116. MOUNTING: SURFACE. ENCLOSURE: NEMA 1. VOLTAGE: 208Y/120V, 3Ø, 4W. LOAD CLASSIFICATION table with columns for USE AND/OR AREA SERVED, P, TRIP, CKT#, A, B, C, CT#, TRIP, P, USE AND/OR AREA SERVED.

LOAD CALCULATION: SES-116. 1200 A - 208Y/120V, 3Ø, 4W. LOAD (VA) table with columns for ØA, ØB, ØC. TOTAL EQUIVALENT DEMAND FACTOR: 97.19%

LOAD CALCULATION: DS-116. 1000 A - 208Y/120V, 3Ø, 4W. LOAD (VA) table with columns for ØA, ØB, ØC. TOTAL EQUIVALENT DEMAND FACTOR: 97.19%

LOAD CALCULATION: C2. 400 A - 208Y/120V, 3Ø, 4W. LOAD (VA) table with columns for ØA, ØB, ØC. TOTAL EQUIVALENT DEMAND FACTOR: 100.00%

CALCULATIONS: SHORT CIRCUIT, VOLTAGE DROP. Columns include NODE ID, SOURCE, CITY PER PHASE, CONDUCTOR SIZE, CONDUCTOR MATERIAL, PHASE, CONDUIT TYPE, DISTANCE (FT), NODE Isc, MIN. EQ. SCORING, CURRENT, PF, VOLTAGE DROP, END VOLTAGE, % V DROP (OVERALL).

Low Voltage Relay Panel: RP. Minimum Relay SCCR: 14,000A. Table with columns for Relay No., Relay No., Use and/or Area Served.

- 1. ENABLE AT SUNSET (PC CONTROL) / OFF AT 11:00 PM. 2. ENABLE AT SUNSET (PC CONTROL) / OFF AT SUNRISE. 3. ON AT SUNSET (ASTRONOMICAL CONTROL) / OFF AT 11:00 PM. 4. ON AT SUNSET (ASTRONOMICAL CONTROL) / OFF AT SUNRISE. 5. 5 DAY, 2 DAY CLOCK SCHEDULE REQUIRED. 6. PROVIDE BARRIER FOR EMERGENCY BRANCH CIRCUIT WITHIN PANEL. 7. OWNER DETERMINED SCHEDULE TO ENABLE LOCAL LINE VOLTAGE SWITCHING. 8. OWNER DETERMINED SCHEDULE.

PANEL: C1. SUPPLY FROM: DS-116. MOUNTING: SURFACE. ENCLOSURE: NEMA 1. VOLTAGE: 208Y/120V, 3Ø, 4W. LOAD CLASSIFICATION table with columns for USE AND/OR AREA SERVED, P, TRIP, CKT#, A, B, C, CT#, TRIP, P, USE AND/OR AREA SERVED.